

# MARYLAND AVENUE BRIDGE MURAL

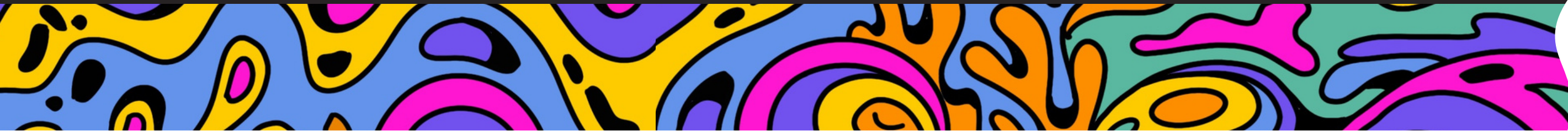


# COMMUNITY ASSOCIATION INPUT SESSIONS

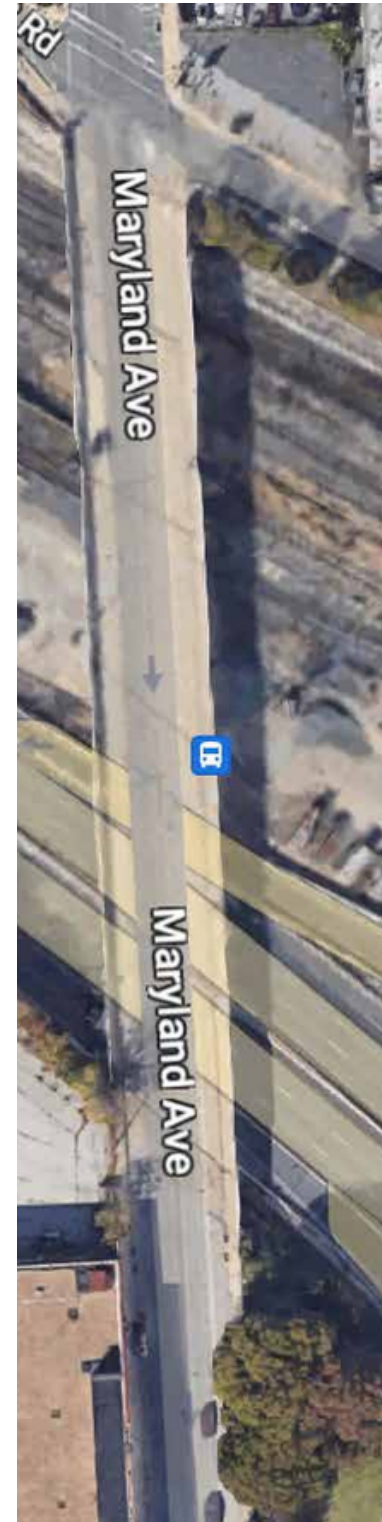
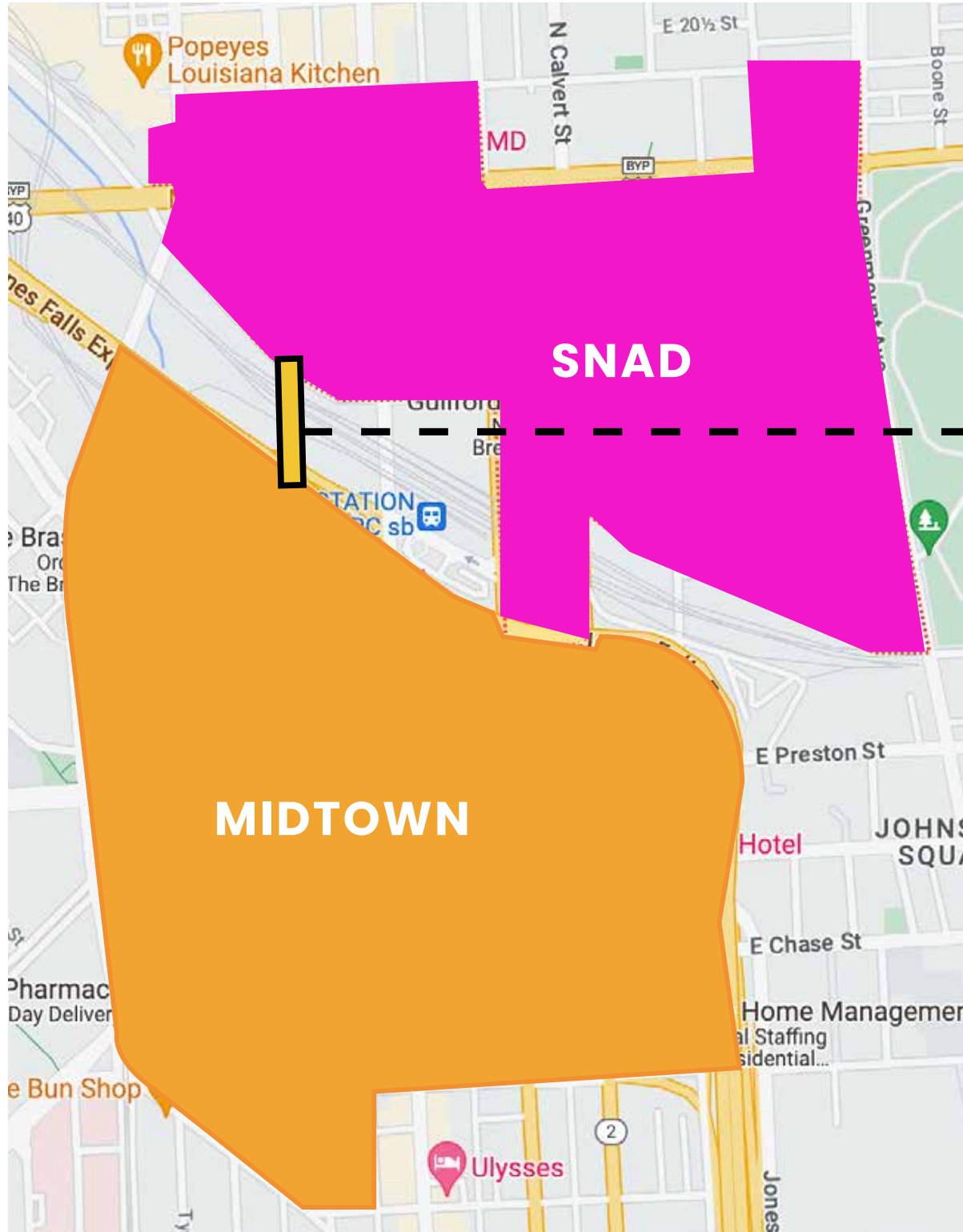
BOLTON HILL / CHARLES NORTH / MADISON PARK / MT. VERNON



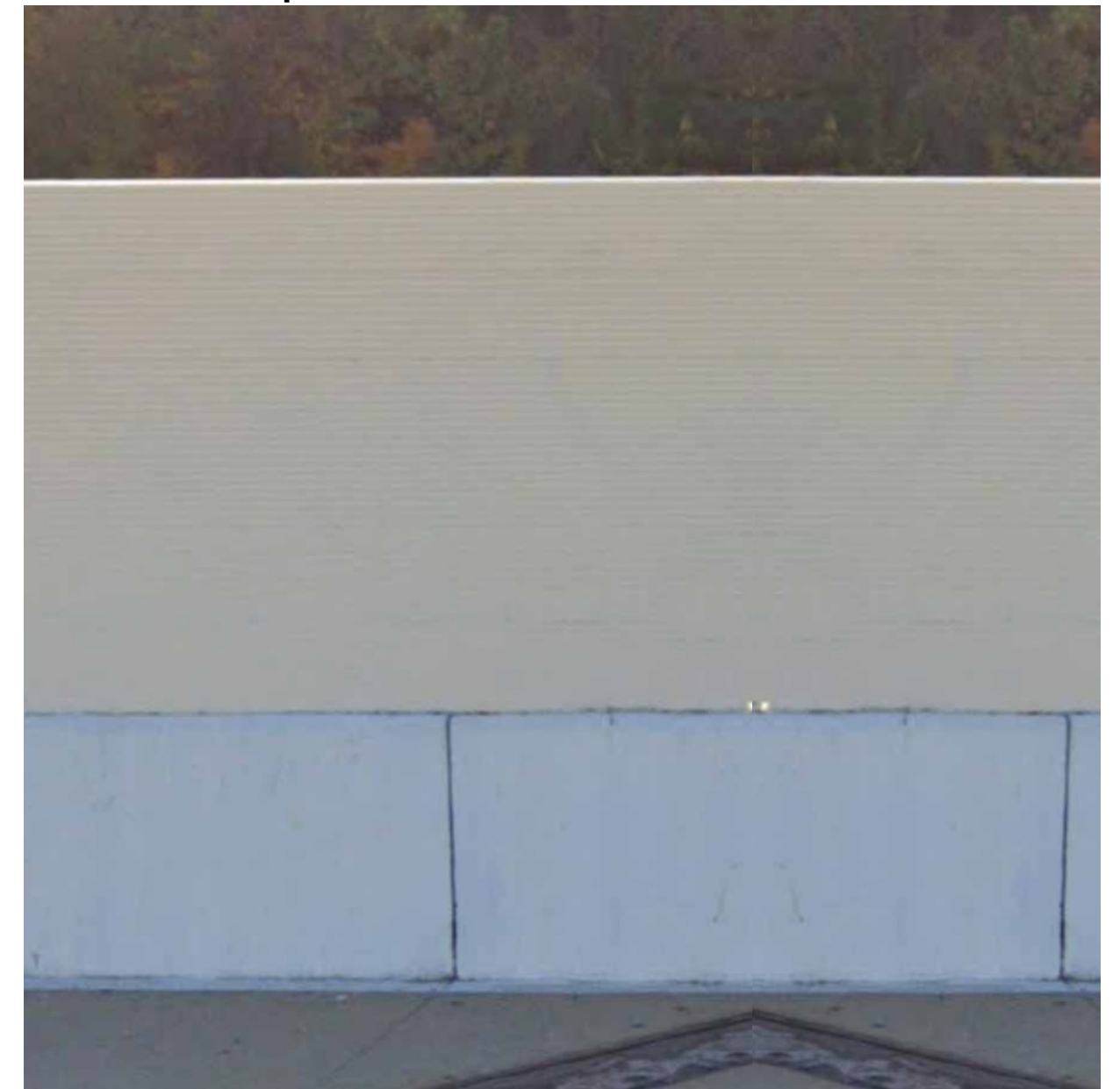
# PRESENTED BY SABA HAMIDI



# MURAL LOCATION & SITE DETAILS



Area to be painted:



# APPROACH

## A mural for everyone (and no one).

Given MD Ave's location, the bridge falls in an area that's not specific to one neighborhood or community.

..."It belongs to no one, therefore it belongs to everyone."

## LET'S ALLOW ART TO DRAW PEOPLE IN AND **CONNECT** OUR COMMUNITIES.

- Design that's INCLUSIVE
- Images that ENGAGE the broadest range of communities
- Avoid text or any specific language

**+ ABSTRACT**      **+ MEMORABLE**  
**+ COLORFUL**    **+ LIVELY**



# ARTIST

Saba Hamidi  
Muralist



MARYLAND AVE. BRIDGE MURAL

# STAGE 1

August 29, 2023, Preliminary Concepts Presented

**CONCEPT 1:**  
Natural +  
Soft



**CONCEPT 2:**  
Geometric +  
Detailed



**CONCEPT 3:**  
Amorphous +  
Dynamic



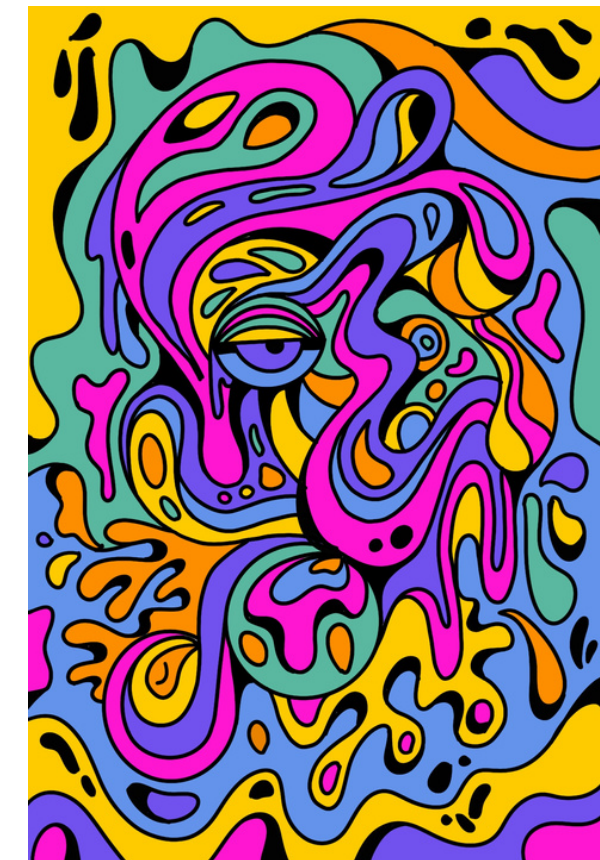
# STAGE 2

September 23, Artscape Attendee Engagement

**CONCEPT 1:**  
Geometric +  
Detailed



**CONCEPT 2:**  
Amorphous +  
Dynamic



# STAGE 2

September 23, Artscape Attendee Engagement



LET'S ENVISION THE  
MARYLAND AVENUE  
BRIDGE TOGETHER!





# STAGE 2

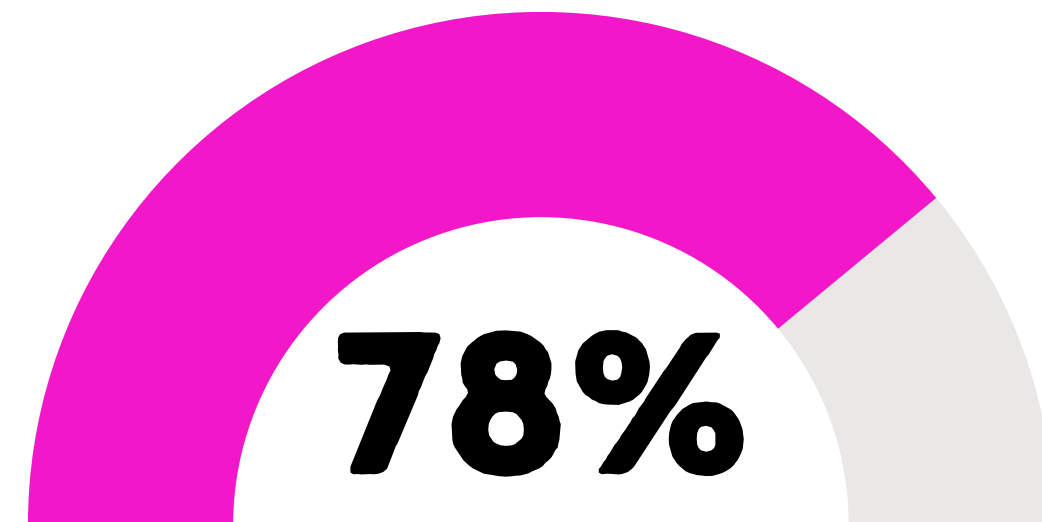
September 23, Artscape Attendee Engagement Feedback



**Concept 2:** Amorphous + Dynamic

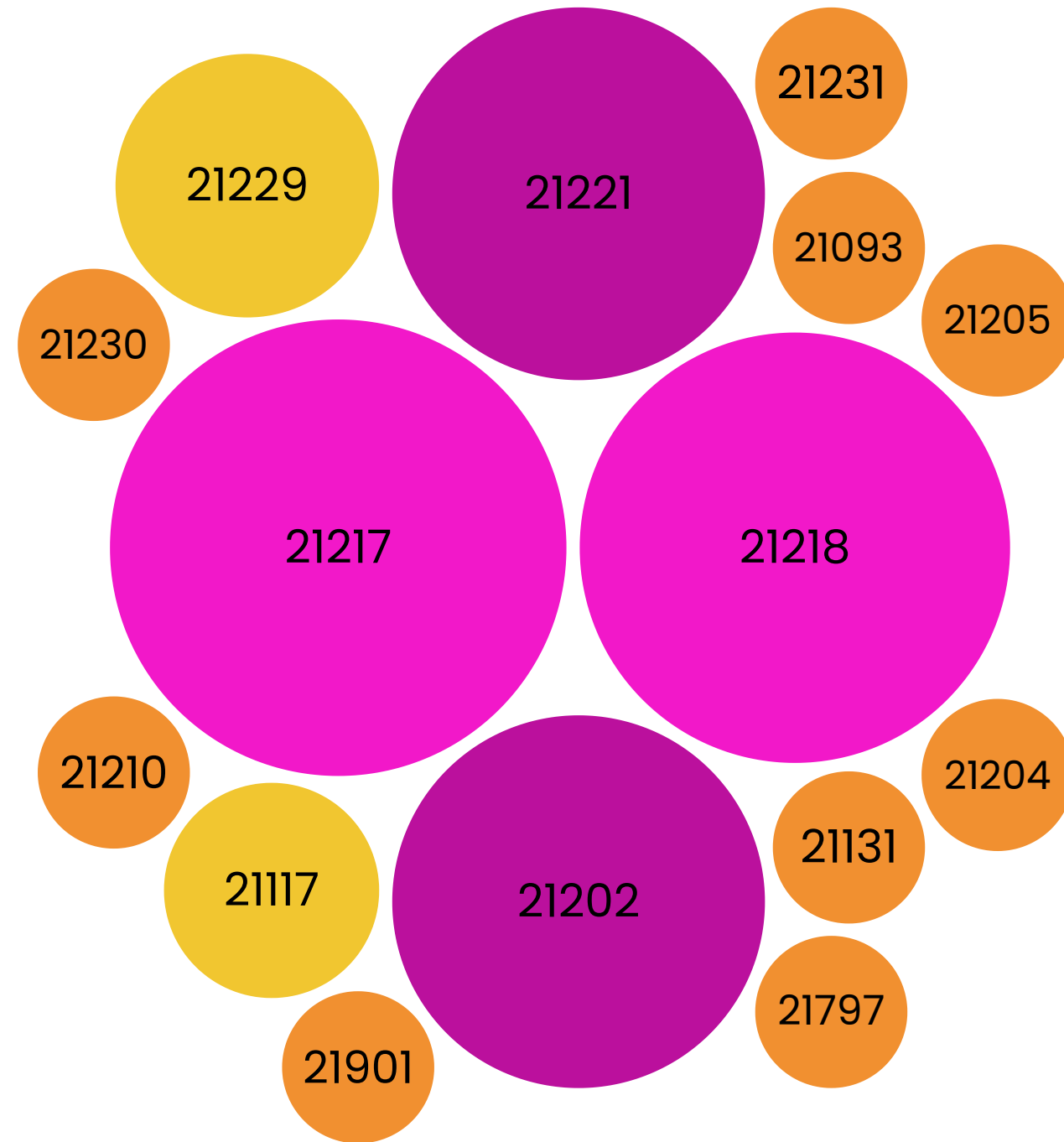
## Question 3:

Which concept do you like the best?



# STAGE 2

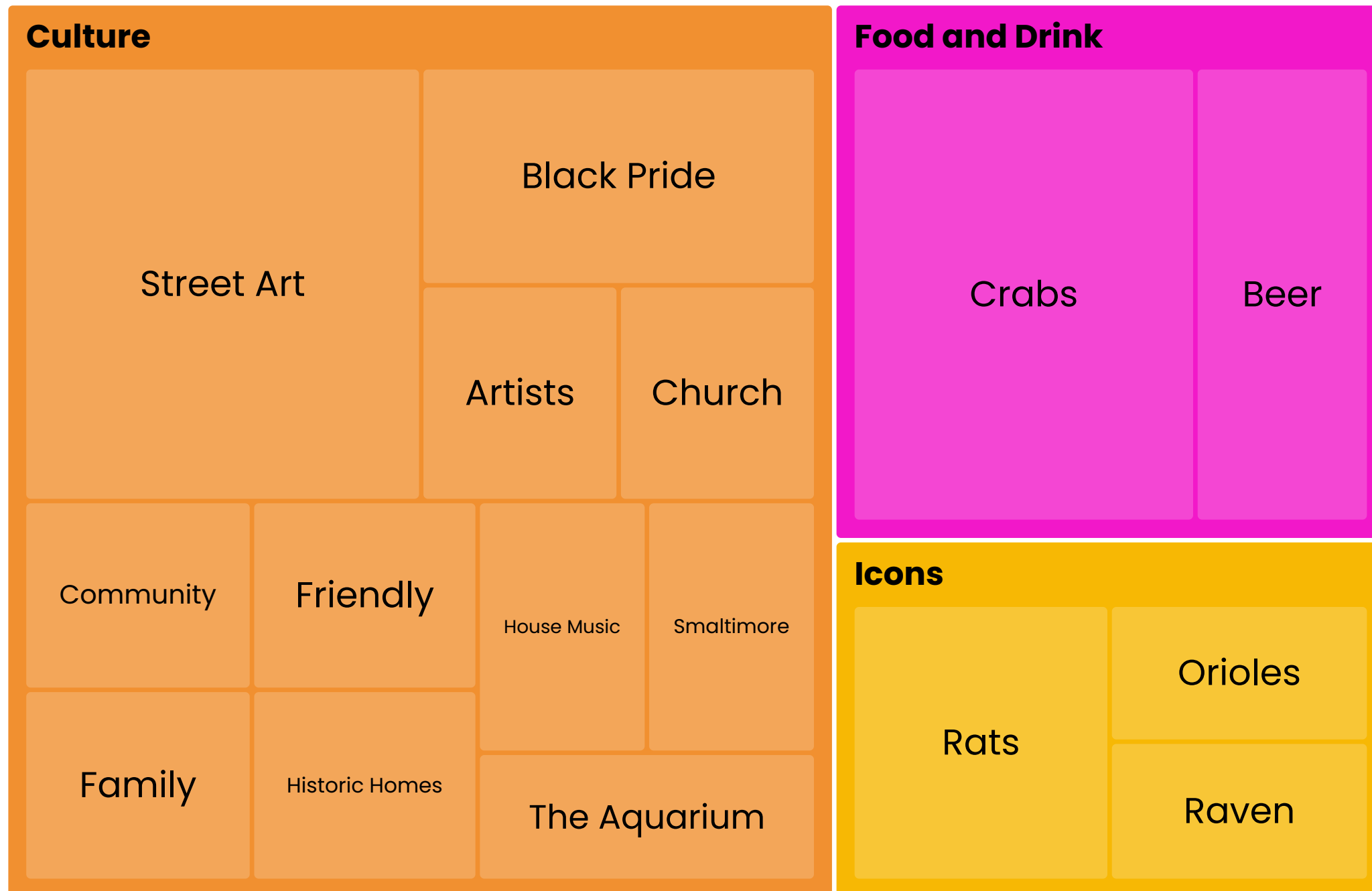
September 23, Artscape Attendee Engagement Feedback



**Question 1:**  
What is your zip code?

# STAGE 2

September 23, Artscape Attendee Engagement Feedback



**Question 3:**  
What imagery makes you think of Baltimore?

# AMORPHOUS + DYNAMIC IMAGERY



# QUESTIONS?

## MARYLAND AVE. BRIDGE MURAL

